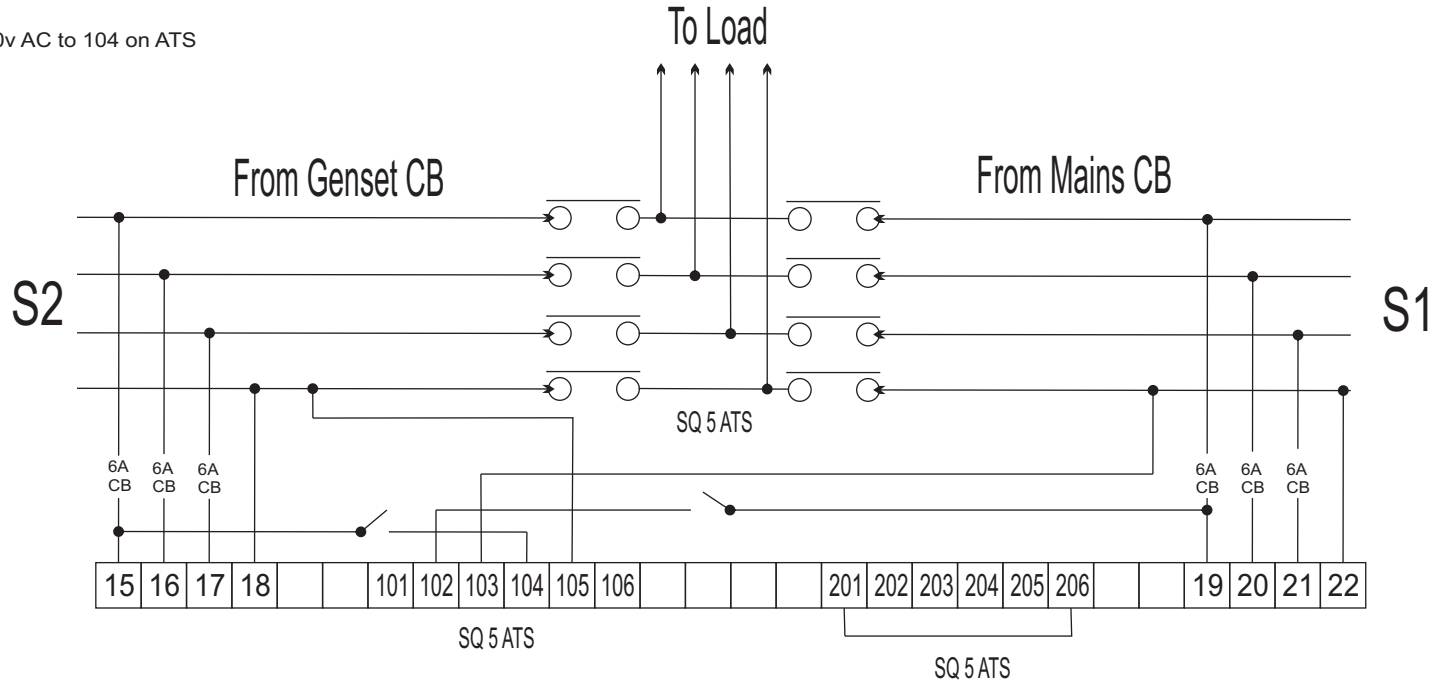


Output A Relay Com L1 230v AC from S1  
 Battery - N/C L1 230v AC to 102 on ATS  
 N/O

Output B Relay Com L1 230v AC from S2  
 Battery - N/C L1 230v AC to 104 on ATS  
 N/O



- 1 Battery -
- 2 Battery +
- 23 Remotestart
- W L1 220v AC
- O N 0v AC

